

## ELECTROVÁLVULAS

Solenoid valve

Électrovalve

Elettrovalvole

### Electroválvula NG10- corredera S1

NG10 Solenoid valve - spool S1

Electro. NG10- tiroir S1

Elettrovalvola NG 10 - cursore S1



Referencia Part n°	TAMAÑO SIZE	VOLTAJE (V) VOLTAGE (V)	CAUDAL MÁX. (l/min) MAX. FLOW (l/min)	PRESIÓN MÁX. (bar) MAX. PRESSURE (bar)	€
DS5-S1/11N-A110-50K1	NG-10	110 VAC	120	320	467,69
DS5-S1/11N-A230-50K1	NG-10	220 VAC	120	320	519,47
DS5-S1/11N-A24-50K1	NG-10	24 VAC	120	320	467,69
DS5-S1/11N-A48-50K1	NG-10	48 VAC	120	320	499,78
DS5-S1/11N-D12K1	NG-10	12 VDC	120	320	467,69
DS5-S1/11N-D24K1	NG-10	24 VDC	120	320	467,69
DS5-S1/11N-D48K1	NG-10	48 VDC	120	320	499,78

### Electroválvula NG10- corredera S2

NG10 Solenoid valve - spool S2

Electro. NG10- tiroir S2

Elettrovalvola NG 10 - cursore S2



Referencia Part n°	TAMAÑO SIZE	VOLTAJE (V) VOLTAGE (V)	CAUDAL MÁX. (l/min) MAX. FLOW (l/min)	PRESIÓN MÁX. (bar) MAX. PRESSURE (bar)	€
DS5-S2/11N-A110-50K1	NG-10	110 VAC	120*	320	467,69
DS5-S2/11N-A230-50K1	NG-10	220 VAC	120*	320	467,69
DS5-S2/11N-A24-50K1	NG-10	24 VAC	120*	320	467,69
DS5-S2/11N-A48-50K1	NG-10	48 VAC	120*	320	555,44
DS5-S2/11N-D12K1	NG-10	12 VDC	120*	320	467,69
DS5-S2/11N-D24K1	NG-10	24 VDC	120*	320	467,69
DS5-S2/11N-D48K1	NG-10	48 VDC	120*	320	502,24

Ver gráficos en documentación técnica / Working range on technical data sheet / Plage de travail dans la fiche technique / Consulta i grafici nella scheda tecnica

### Electroválvula NG10- corredera S3

NG10 Solenoid valve - spool S3

Electro. NG10- tiroir S3

Elettrovalvola NG 10 - cursore S3



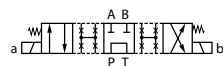
Referencia Part n°	TAMAÑO SIZE	VOLTAJE (V) VOLTAGE (V)	CAUDAL MÁX. (l/min) MAX. FLOW (l/min)	PRESIÓN MÁX. (bar) MAX. PRESSURE (bar)	€
DS5-S3/11N-A110-50K1	NG-10	110 VAC	120	320	467,69
DS5-S3/11N-A230-50K1	NG-10	220 VAC	120	320	467,69
DS5-S3/11N-A24-50K1	NG-10	24 VAC	120	320	467,69
DS5-S3/11N-A48-50K1	NG-10	48 VAC	120	320	502,24
DS5-S3/11N-D12K1	NG-10	12 VDC	120	320	467,69
DS5-S3/11N-D24K1	NG-10	24 VDC	120	320	487,15
DS5-S3/11N-D48K1	NG-10	48 VDC	120	320	502,24

### Electroválvula NG10- corredera S4

NG10 Solenoid valve - spool S4

Electro. NG10- tiroir S4

Elettrovalvola NG 10 - cursore S4



Referencia Part n°	TAMAÑO SIZE	VOLTAJE (V) VOLTAGE (V)	CAUDAL MÁX. (l/min) MAX. FLOW (l/min)	PRESIÓN MÁX. (bar) MAX. PRESSURE (bar)	€
DS5-S4/11N-A110-50K1	NG-10	110 VAC	120*	320	523,22
DS5-S4/11N-A230-50K1	NG-10	220 VAC	120*	320	523,22
DS5-S4/11N-A48-50K1	NG-10	48 VAC	120*	320	555,31
DS5-S4/11N-D12K1	NG-10	12 VDC	120*	320	523,22
DS5-S4/11N-D24K1	NG-10	24 VDC	120*	320	581,34
DS5-S4/11N-D48K1	NG-10	48 VDC	120*	320	557,78

Ver gráficos en documentación técnica / Working range on technical data sheet / Plage de travail dans la fiche technique / Consulta i grafici nella scheda tecnica

## ELECTROVÁLVULAS

Solenoid valve  
Électrovalve  
Elettrovalvole

### Electroválvula NG10- corredera TA



NG10 Solenoid valve - spool TA

Electro. NG10- tiroir TA

Elettrovalvola NG 10 - cursore TA



Referencia Part n°	TAMAÑO SIZE	VOLTAJE (V) VOLTAGE (V)	CAUDAL MÁX.(l/min) MAX. FLOW (l/min)	PRESIÓN MAX. (bar) MAX. PRESSURE (bar)	€
DS5-TA/11N-A110-50K1	NG-10	110 VAC	120	320	343,06
DS5-TA/11N-A230-50K1	NG-10	220 VAC	120	320	343,06
DS5-TA/11N-A24-50K1	NG-10	24 VAC	120	320	343,06
DS5-TA/11N-A48-50K1	NG-10	48 VAC	120	320	359,10
DS5-TA/11N-D12K1	NG-10	12 VDC	120	320	343,06
DS5-TA/11N-D24K1	NG-10	24 VDC	120	320	343,06
DS5-TA/11N-D48K1	NG-10	48 VDC	120	320	359,10

### Electroválvula NG10- corredera SA2



NG10 Solenoid valve - spool SA2

Electro. NG10- tiroir SA2

Elettrovalvola NG 10 - cursore SA2



Referencia Part n°	TAMAÑO SIZE	VOLTAJE (V) VOLTAGE (V)	CAUDAL MÁX.(l/min) MAX. FLOW (l/min)	PRESIÓN MAX. (bar) MAX. PRESSURE (bar)	€
DS5-SA2/11N-A110-50K1	NG-10	110 VAC	120	320	343,06
DS5-SA2/11N-A230-50K1	NG-10	220 VAC	120	320	343,06
DS5-SA2/11N-A24-50K1	NG-10	24 VAC	120	320	343,06
DS5-SA2/11N-A48-50K1	NG-10	48 VAC	120	320	359,10
DS5-SA2/11N-D12K1	NG-10	12 VDC	120	320	343,06
DS5-SA2/11N-D24K1	NG-10	24 VDC	120	320	343,06
DS5-SA2/11N-D48K1	NG-10	48 VDC	120	320	359,10

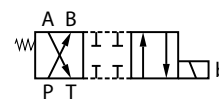
### Electroválvula NG10- corredera TB



NG10 Solenoid valve - spool TB

Electro. NG10- tiroir TB

Elettrovalvola NG 10 - cursore TB



Referencia Part n°	TAMAÑO SIZE	VOLTAJE (V) VOLTAGE (V)	CAUDAL MÁX.(l/min) MAX. FLOW (l/min)	PRESIÓN MAX. (bar) MAX. PRESSURE (bar)	€
DS5-TB/11N-A110-50K1	NG-10	110 VAC	120	320	343,06
DS5-TB/11N-A230-50K1	NG-10	220 VAC	120	320	343,06
DS5-TB/11N-A24-50K1	NG-10	24 VAC	120	320	343,06
DS5-TB/11N-A48-50K1	NG-10	48 VAC	120	320	359,10
DS5-TB/11N-D12K1	NG-10	12 VDC	120	320	343,06
DS5-TB/11N-D24K1	NG-10	24 VDC	120	320	343,06
DS5-TB/11N-D48K1	NG-10	48 VDC	120	320	359,10

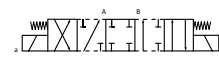
### Electroválvula NG10 compacta- corredera S1



NG10 Compact solenoid valve -spool S1

Electro. NG10 compacte-tiroir S1

Elettrovalvola direzionale compatta a comando diretto NG 10 - cursore S1



Referencia Part n°	TAMAÑO SIZE	VOLTAJE (V) VOLTAGE (V)	CAUDAL MÁX.(l/min) MAX. FLOW (l/min)	PRESIÓN MAX. (bar) MAX. PRESSURE (bar)	€
DL5B-S1/10N-D12K1	NG-10	12 VDC	125	320	365,27
DL5B-S1/10N-D24K1	NG-10	24 VDC	125	320	365,27

### Electroválvula NG10 compacta- corredera S2



NG10 Compact solenoid valve -spool S2

Electro. NG10 compacte-tiroir S2

Elettrovalvola direzionale compatta a comando diretto NG 10 - cursore S2



Referencia Part n°	TAMAÑO SIZE	VOLTAJE (V) VOLTAGE (V)	CAUDAL MÁX.(l/min) MAX. FLOW (l/min)	PRESIÓN MAX. (bar) MAX. PRESSURE (bar)	€
DL5B-S2/10N-D12K1	NG-10	12 VDC	125	320	365,27
DL5B-S2/10N-D24K1	NG-10	24 VDC	125	320	365,27

## ELECTROVÁLVULAS

Solenoid valve  
Électrovalve  
Elettrovalvole

### Electroválvula NG10 compacta- corredera S3



NG10 Compact solenoid valve -spool S3

Electro.NG10 compacte-tiroir S3

Elettrovalvola direzionale compatta a comando diretto NG 10 - cursore S3



Referencia Part n°	TAMAÑO SIZE	VOLTAJE (V) VOLTAGE (V)	CAUDAL MÁX.(l/min) MAX. FLOW (l/min)	PRESIÓN MÁX. (bar) MAX. PRESSURE (bar)	€
DL5B-S3/10N-D12K1	NG-10	12 VDC	125	320	365,27
DL5B-S3/10N-D24K1	NG-10	24 VDC	125	320	365,27

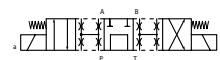
### Electroválvula NG10 compacta- corredera S4



NG10 Compact solenoid valve -spool S4

Electro.NG10 compacte-tiroir S4

Elettrovalvola direzionale compatta a comando diretto NG 10 - cursore S4



Referencia Part n°	TAMAÑO SIZE	VOLTAJE (V) VOLTAGE (V)	CAUDAL MÁX.(l/min) MAX. FLOW (l/min)	PRESIÓN MÁX. (bar) MAX. PRESSURE (bar)	€
DL5B-S4/10N-D12K1	NG-10	12 VDC	125	320	405,99
DL5B-S4/10N-D24K1	NG-10	24 VDC	125	320	405,99

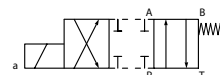
### Electroválvula NG10 compacta- corredera TA



NG10 Compact solenoid valve -spool TA

Electro.NG10 compacte-tiroir TA

Elettrovalvola direzionale compatta a comando diretto NG 10 - cursore TA



Referencia Part n°	TAMAÑO SIZE	VOLTAJE (V) VOLTAGE (V)	CAUDAL MÁX.(l/min) MAX. FLOW (l/min)	PRESIÓN MÁX. (bar) MAX. PRESSURE (bar)	€
DL5B-TA/10N-D12K1	NG-10	12 VDC	125	320	280,12
DL5B-TA/10N-D24K1	NG-10	24 VDC	125	320	280,12

### Electroválvula NG10 compacta- corredera SA2



NG10 Compact solenoid valve -spool SA2

Electro.NG10 compacte-tiroir SA2

Elettrovalvola direzionale compatta a comando diretto NG 10 - cursore SA2



Referencia Part n°	TAMAÑO SIZE	VOLTAJE (V) VOLTAGE (V)	CAUDAL MÁX.(l/min) MAX. FLOW (l/min)	PRESIÓN MÁX. (bar) MAX. PRESSURE (bar)	€
DL5B-SA2/10N-D12K1	NG-10	12 VDC	125	320	280,12
DL5B-SA2/10N-D24K1	NG-10	24 VDC	125	320	280,12

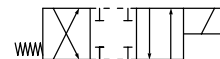
### Electroválvula NG10 compacta- corredera TB



NG10 Compact solenoid valve -spool TB

Electro.NG10 compacte-tiroir TB

Elettrovalvola direzionale compatta a comando diretto NG 10 - cursore TB



Referencia Part n°	TAMAÑO SIZE	VOLTAJE (V) VOLTAGE (V)	CAUDAL MÁX.(l/min) MAX. FLOW (l/min)	PRESIÓN MÁX. (bar) MAX. PRESSURE (bar)	€
DL5B-TB/10N-D12K1	NG-10	12 VDC	125	320	280,12
DL5B-TB/10N-D24K1	NG-10	24 VDC	125	320	280,12

### Bobinas corriente continua para DS5/11N



DS5/11N Coils (direct current)

Bobines courant continu pour DS5/11N

Bobine corrente continua per DS5/11N

Referencia Part n°	VOLTAJE (V) VOLTAGE (V)	POTENCIA (W) POWER (W)	€
C31-D12K1/20	12 VDC	32.7	70,34
C31-D24K1/20	24 VDC	31	70,60
C31-D48K1/20	48 VDC	29.5	87,62

## ELECTROVÁLVULAS

Solenoid valve  
Électrovalve  
Elettrovalvole

### Bobinas corriente alterna para DS5/NG10



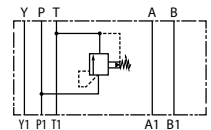
DS5/NG10 Coils (alternative current)  
Bobines courant alternatif pour DS5/NG10  
Bobine corrente alternata per DS5/NG 10

Referencia Part n°	VOLTAJE (V) VOLTAGE (V)	POTENCIA (W) POWER (W)	€
C25.4-A24-50K1/11	24 VAC	95	70,60
C25.4-A110-50K1/10	24 VAC	95	70,60
C25.4-A230-50K1/10	230 VAC	105	70,60
C25.4-A48-50K1/10	48 VAC	110	87,00

### Limitadora simple en P - descarga en T



Relief valve in P - discharge in T  
Limiteur pression sur P - décharge sur T  
Valvola limitatrice di pressione semplice in P - con scarico in T



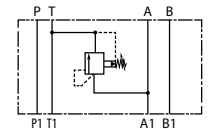
Referencia Part n°	TAMAÑO SIZE	CAUDAL MÁX. (l/min) MAX. FLOW (l/min)	PRESIÓN MÁX. (bar) MAX. PRESSURE (bar)	CAMPO REG. (bar) REG. RATE (bar)	€
RQ4M3-SP/51	NG-10	120	350	0 - 70	346,89

Hasta fin de existencias / Until end of stock / Jusqu'à la fin du stock / Fino ad esaurimento

### Limitadora simple en A - descarga en T



Relief valve in A - discharge in T  
Limiteur pression sur A - décharge sur T  
Valvola limitatrice di pressione semplice in A - con scarico in T



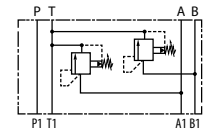
Referencia Part n°	TAMAÑO SIZE	CAUDAL MÁX. (l/min) MAX. FLOW (l/min)	PRESIÓN MÁX. (bar) MAX. PRESSURE (bar)	CAMPO REG. (bar) REG. RATE (bar)	€
RQ4M3-SAT/51	NG-10	120	350	0 - 70	346,89
RQ4M4-SAT/51	NG-10	120	350	0 - 140	346,89

Hasta fin de existencias / Until end of stock / Jusqu'à la fin du stock / Fino ad esaurimento

### Limitadora doble en A y B -descarga en T



Double relief valve in A and B - discharge in T  
Limiteur double sur A et B - décharge sur T  
Valvola limitatrice di pressione doppia in A e B - con scarico in T



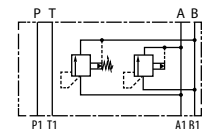
Referencia Part n°	TAMAÑO SIZE	CAUDAL MÁX. (l/min) MAX. FLOW (l/min)	PRESIÓN MÁX. (bar) MAX. PRESSURE (bar)	CAMPO REG. (bar) REG. RATE (bar)	€
RQ4M3-DT/51	NG-10	120	350	0 - 70	469,68
RQ4M4-DT/51	NG-10	120	350	0 - 140	469,68

Hasta fin de existencias / Until end of stock / Jusqu'à la fin du stock / Fino ad esaurimento

### Limit. doble en A y B -descarga cruzada



Double relief valve in A and B - crossed discharge  
Limiteur double sur A et B - décharges croisées  
Valvola limitatrice di pressione doppia sulle via A-B con scarichi incrociati



Referencia Part n°	TAMAÑO SIZE	CAUDAL MÁX. (l/min) MAX. FLOW (l/min)	PRESIÓN MÁX. (bar) MAX. PRESSURE (bar)	CAMPO REG. (bar) REG. RATE (bar)	€
RQ4M3-D/51	NG-10	120	350	0 - 70	500,38
RQ4M5-D/51	NG-10	120	350	0 - 210	500,38

Hasta fin de existencias / Until end of stock / Jusqu'à la fin du stock / Fino ad esaurimento

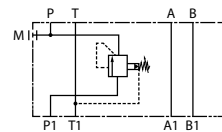
## ELECTROVÁLVULAS

Solenoid valve  
Électrovalve  
Elettrovalvole

### Válvula reductora de presión pilotada NG10



NG10 Pilot operated pressure reducing valve  
Réducteur de pression piloté NG10  
Valvola riduttrice di pressione pilotata NG 10

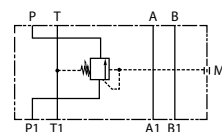


Referencia Part n°	TAMAÑO SIZE	CAUDAL MÁX. (l/min) MAX. FLOW (l/min)	PRESIÓN MÁX. (bar) MAX. PRESSURE (bar)	CAMPO REG. (bar) REG. RATE (bar)	€
Z4M3-I/50	NG-10	80	320	5 - 70	637,03
Z4M4-I/50	NG-10	80	320	8 - 140	637,03
Z4M5-I/50	NG-10	80	320	10 - 210	637,03
Z4M6-I/50	NG-10	80	320	15 - 320	637,03

### Válvula de secuencia



Sequence valve  
Valve de séquence  
Valvola di sequenza

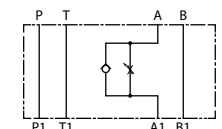


Referencia Part n°	TAMAÑO SIZE	CAUDAL MÁX. (l/min) MAX. FLOW (l/min)	PRESIÓN MÁX. (bar) MAX. PRESSURE (bar)	CAMPO REG. (bar) REG. RATE (bar)	€
SD4M3/50	NG-10	80	320	0 - 70	851,27
SD4M4/50	NG-10	80	320	0 - 140	851,27
SD4M5/50	NG-10	80	320	0 - 210	851,27

### Válvula reguladora de caudal simple unidireccional NG10- A



NG-10 Unidirectional flow restrictor valve in A line  
Étrangleur de débit simple unidirectionnel sur ligne A, NG-10  
Valvola regolatrice di portata semplice unidirezionale NG 10 in A

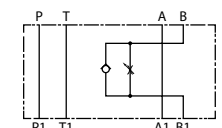


Referencia Part n°	TAMAÑO SIZE	CAUDAL MÁX. (l/min) MAX. FLOW (l/min)	PRESIÓN MÁX. (bar) MAX. PRESSURE (bar)	SENTIDO DIRECTION	TOMAS A-B OIL PORTS A-B	€
QTM5-SA/10/S	NG-10	80	320	Salida / Output	A	385,38

### Válvula reguladora de caudal simple unidireccional NG10 - B



NG-10 Unidirectional flow restrictor valve in B line  
Étrangleur de débit simple unidirectionnel sur ligne B, NG-10  
Valvola regolatrice di portata semplice unidirezionale NG 10 in B

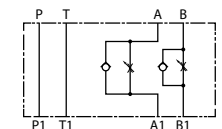


Referencia Part n°	TAMAÑO SIZE	CAUDAL MÁX. (l/min) MAX. FLOW (l/min)	PRESIÓN MÁX. (bar) MAX. PRESSURE (bar)	SENTIDO DIRECTION	TOMAS A-B OIL PORTS A-B	€
QTM5-SB/10/S	NG-10	80	320	Salida / Output	B	570,62

### Válvula reguladora de caudal doble unidireccional NG10 -salida



NG-10 Unidirectional flow restrictor valve in A & B lines - retour  
Étrangleur de débit unidirectionnel sur lignes A et B, NG-10 descente  
Valvola regolatrice di portata doppia unidirezionale NG 10 - controllo in uscita

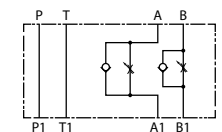


Referencia Part n°	TAMAÑO SIZE	CAUDAL MÁX. (l/min) MAX. FLOW (l/min)	PRESIÓN MÁX. (bar) MAX. PRESSURE (bar)	SENTIDO DIRECTION	TOMAS A-B OIL PORTS A-B	€
QTM5-D/10/S	NG-10	80	320	Salida / Output	A - B	465,89

### Válvula reguladora de caudal doble unidireccional NG10 -entrada



NG-10 Unidirectional flow restrictor valve in A & B lines (upwards)  
Étrangleur de débit unidirectionnel sur lignes A et B, NG-10 (montée)  
Valvola regolatrice di portata doppia unidirezionale NG 10 - controllo in entrata



Referencia Part n°	TAMAÑO SIZE	CAUDAL MÁX. (l/min) MAX. FLOW (l/min)	PRESIÓN MÁX. (bar) MAX. PRESSURE (bar)	SENTIDO DIRECTION	TOMAS A-B OIL PORTS A-B	€
QTM5-RD/10/S	NG-10	80	320	Entrada / Input	A - B	468,09

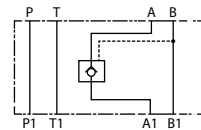
## ELECTROVÁLVULAS

Solenoid valve  
Électrovalve  
Elettrovalvole



### Válvula antirretorno simple pilotada NG10 -A

NG10 Pilot operated single check valve -A  
Clapet anti-retour simple piloté NG10 -A  
Valvola di blocco semplice pilotata NG10-A

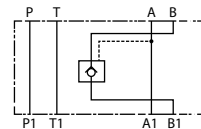


Referencia Part n°	TAMAÑO SIZE	PRESION MAX.(bar) MAX. PRESSURE (bar)	CAUDAL (l/min) FLOW (l/min)	TOMAS A-B OIL PORTS A-B	€
CHM5-SA/10	NG-10	320	100	A	399,46



### Válvula antirretorno simple pilotada NG10 -B

NG10 Pilot operated single check valve-B  
Clapet anti-retour simple piloté NG10 -B  
Valvola di blocco semplice pilotata NG10-B

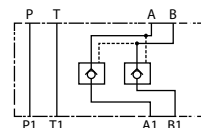


Referencia Part n°	TAMAÑO SIZE	PRESION MAX.(bar) MAX. PRESSURE (bar)	CAUDAL (l/min) FLOW (l/min)	TOMAS A-B OIL PORTS A-B	€
CHM5-SB/10	NG-10	320	100	B	399,46



### Válvula antirretorno doble pilotada NG10

NG10 Pilot operated double check valve  
Clapet anti-retour double piloté NG10  
Valvola di blocco doppia pilotata NG10

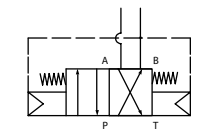


Referencia Part n°	TAMAÑO SIZE	PRESION MAX.(bar) MAX. PRESSURE (bar)	TOMAS A-B OIL PORTS A-B	€
CHM5-D/10	NG-10	320	A - B	422,34



### Válvula inversora NG10

NG10 Self-reversing valve  
Valve à inversion automatique NG10  
Valvola ad inversione automatica NG 10

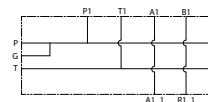


Referencia Part n°	PRESIÓN MÍN. (bar) MIN. PRESS. (bar)	CAUDAL MÍN. (l/min) MIN. FLOW (l/min)	PRESIÓN MAX. (bar) MAX. PRESSURE (bar)	€
DSB5-RTA/10N	60	10	320	426,83



### Placa base NG10 para 1 electroválvula - sin limitadora

Subplates for NG10 solenoid valve without relief valve  
Embase NG10 pour 1 electro. - sans limiteur  
Piastra di base NG10 per 1 elettrovalvola senza limitatrice



Referencia Part n°	ROSCA THREAD	TAMAÑO SIZE	PRESIÓN MAX. (bar) MAX. PRESSURE (bar)	TOMAS A-B OIL PORTS A-B	€
PBKV-10-12TV	1/2" BSP	NG-10	350	Verticales / Vertical	127,09

Otros tamaños bajo consulta / Other sizes on request / Autres dimensions sur demande / Altre dimensioni su richiesta

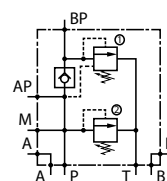
## ELECTROVÁLVULAS

Solenoid valve  
Électrovalve  
Elettrovalvole



### Bloques de alta y baja NG10

NG10 High/low pressure blocks  
Blocs forés de control NG10  
Blocchi di alta e bassa NG10

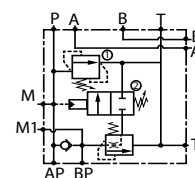


Referencia Part n°	Tamaño Size	Caudal máx. (l/min) Max. flow (l/min)	Presión máx. (bar) Max. Pressure. (bar)	Campo reg. (bar) Reg. rate (bar)	€
<b>VD CTP 05 NG-10</b>	NG-10	90	350	10-210	<b>731,54</b>



### Bloques de alta y baja NG10

NG10 High/low pressure blocks  
Blocs forés de control NG10  
Blocchi di alta e bassa NG10



Referencia Part n°	ROSCA THREAD	P1=1	P2=2	CAUDAL MÁX. (l/min) MAX. FLOW (l/min)	CAUDAL MÍNIMO (l/min) MINIMUM FLOW (l/min)	€
<b>FPMS-PDL10-P-3/4 20-10</b>	3/4" BSP	50-220	20-100	150	40	<b>655,67</b>
<b>FPMS-PDL10-P-3/4 35-20</b>	3/4" BSP	80-350	50-220	150	40	<b>655,67</b>

FLUIDAL